

---

# EPSON DISCPRODUCER™ PP-100AP

---

Are you looking for a system which can be used to print on blank CDs or DVDs in large quantities and at very low costs? The Epson Discproducer™ PP-100AP has been developed specifically to meet these requirements. It can print up to 95 discs per hour and is perfect for copying services, large businesses or music, TV and video producers.

## Cost-effective mass printing

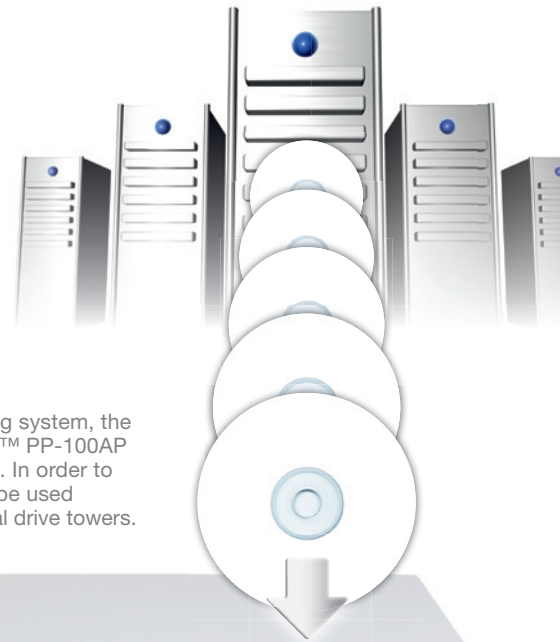
**Fast:** With the Epson Discproducer™ PP-100AP, up to 50 media per hour can be printed in brilliant photo quality. If faster printing is more important to you, then the rate can be increased to as much as 95 media per hour.

**Print capacity:** Epson makes mass printing easy. Up to six Epson Discproducer™ PP-100APs can be controlled in parallel from one PC. In this way, you can increase your print capacity at each workstation to 300 media per hour with the highest quality setting or 570 media per hour in high-speed mode.

**Long-lasting:** The Epson Discproducer™ PP-100AP has been designed to have a **service life of more than 100,000 discs**. The user-friendly maintenance cartridges need to be changed after approx. 30,000, 60,000 and 90,000 discs. This will keep your Epson Discproducer™ PP-100AP in top condition. The sealed housing, which protects against dust, and the patented AcuGrip™ robotic arm also contribute to the exceptionally long service life.

**Photo quality:** Epson's Micro Piezo™ technology with six different colours also offers exceptional quality with large print quantities. Impress your clients with vivid, razor-sharp images printed on high-gloss, smudge-proof and waterproof media recommended by Epson.

**Economical:** Enjoy the benefits of extremely low print costs. The low purchase price of the Epson Discproducer™ PP-100AP, the high-volume ink tanks and the very long service life make this possible. One ink set can print the entire surface area of well over 1,000 discs. Separate colour cartridges minimise your operating costs as you only need to replace the colour that's used up.

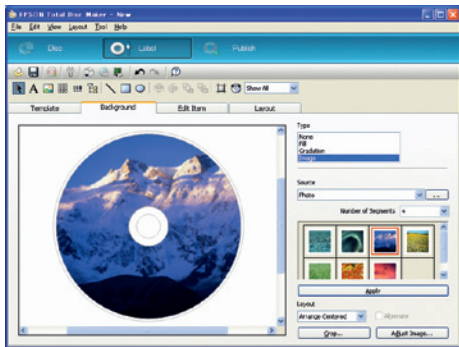


As it is a pure printing system, the Epson Discproducer™ PP-100AP has no burning drive. In order to burn media, it must be used together with external drive towers.



## EFFORTLESS OPERATION

The Epson Discproducer™ PP-100AP is just as easy to operate as any office printer. The use of the software and hardware is intuitive, leaving you free to concentrate on your day-to-day work.



With the Total Disc Maker software, it is easy to create your own printed image for CD/DVD. Whether you want to use photographs, graphics, text or pre-existing templates, there are virtually no restrictions on your creativity.



In the final step, you can select the ideal quality and speed setting for your project:  
**Quality:** 50 media per hour  
**Speed:** 70 media per hour  
**High-speed:** 95 media per hour



Six separate colour cartridges ensure a richly coloured printed image.



The maintenance cartridge is very easy to change.

## TECHNICAL SPECIFICATIONS

<b>Print speed</b>	50 discs/hour (level 1); 75 discs/hour (level 2); 95 discs/hour (level 3)
<b>Print head</b>	Black ink: 180 nozzles; Colour ink: 180 nozzles × 5 colours
<b>Print resolution</b>	Level 1 (high-resolution): 1,440 dpi × 1,440 dpi; Level 2: 1,440 dpi × 720 dpi; Level 3 (high-speed): 720 dpi × 720 dpi
<b>Stacker 1, 2, 3</b>	50 discs (it's possible to print 100 discs without stopping by using these stackers)
<b>Stacker 4</b>	5 discs
<b>Interfaces</b>	USB 2.0 high-speed × 1
<b>Inkset capacity</b>	1,000 discs or more (Ø 45 to 116 mm, 16.7 % colour sharing, continuous printing, mode setting: highest resolution)
<b>Included Software</b>	Total Disc Maker to create, print and publish discs
<b>Required IT SW-environment</b>	Windows® 7 Home/Premium/Professional/Enterprise/Ultimate; Windows Vista® (SP1 or later) Home/Business/Enterprise/Ultimate; Windows® XP (SP2 or later) Home Edition/Professional; Windows® 2000 (SP4 or later) Professional
<b>Required IT HW-environment</b>	CPU: Pentium® 4, 1.4 GHz or higher or its compatible processor; Graphics: XGA or more, 65,536 colours or more; Interface: Universal Serial Bus Specifications Revision 2.0, Transmission speed: 480 Mbps (High-Speed Device) (USB ports that use some ATI™ chipsets are not supported. Please refer to the detailed specifications.)
<b>Supported Media</b>	Outside diameter: 120 mm ± 0.3 mm; Inside diameter: 15 mm + 0.1/- 0 mm; Thickness: 1.2 mm + 0.3/- 0.1 mm; Form: supports common 12 cm discs. Specially-shaped discs are not supported. Surface: printable (high quality or glossy), for glossy discs only Epson recommended are supported.
<b>Rated voltage</b>	AC 100 V to A C240 V; Frequency: 50 Hz to 60 Hz
<b>External dimensions</b>	Width: 377 mm; Depth: 465 mm; Height: 348 mm (excluding the cables); Weight: approx. 22 kg
<b>Temperature and relative humidity</b>	Operating: 10 °C to 35 °C, 20 % to 80 % (no condensation); Storage: - 20 °C to 40 °C, 5 % to 85 % (no condensation); Transporting: - 20 °C to 60 °C, 5 % to 85 % (no condensation)
<b>Standards supported</b>	Europe: CE Marking, EMC: 2004/108/EC, EN55022 class B, Safety: EN60950, TÜV; Russia: GOST-R
<b>Product life</b>	100,000 discs (with level 3, level 2 and level 1 bi-directional printing), 5 years (at room temperature)
<b>Maintenance box life</b>	30,000 discs when printing 3,000 discs/month. Value may not be reached if manual cleaning is run more than necessary.

For more information please contact

Tel: 0871 222 6702† (UK)  
 01 436 7742 (Republic of Ireland)  
 E-mail: enquiries@epson.co.uk

Web: www.epson.co.uk  
 www.epson.ie  
 Chat: etalk.epson-europe.com

Trademarks and registered trademarks are the property of Seiko Epson® Corporation or their respective owners. Product information is subject to change without prior notice.  
 †Calls cost 10 pence per minute from a standard BT landline. Calls from other networks may vary.

**EPSON®**